

# RF-DASH Newsletter

October 2019, V. 3



## Newsletter Highlights

- National Training a Success!
- Know of Anyone Interested in a RF-DASH Training?
- Improvements to saferfarm.org
- We Want to Help You Conduct a RF-DASH Training
- Tell Your Story
- RF-DASH in the News



## **RF-DASH National Pilot Training A Huge Success!**

September 6th-8th  
Minneapolis, MN

We reached out to three National Fire Protection Association (NFPA) committee members to see if the RF-DASH program can become part of an existing standard for rural fire/EMS departments to follow. Receiving positive feedback, we decided to pursue a national training pilot to evaluate if the project is generalizable enough to be used in other regions.

The national training brought in 18 individuals from around the country (Minnesota,

Wisconsin, New York, Ohio, Idaho, Utah, Washington, Nebraska, and Pennsylvania) that included a mixture of agricultural health and safety specialists, fire/EMS, health care providers, and National Fire Protection Association (NFPA) committee members. The training consisted of two full days of instruction, including a classroom and on-farm portion, and a round table discussion on feasibility and adaptations of the program to a national initiative. Our hope is to instill collaboration amongst the newly trained partners and encourage them to implement the project in their regions.

During the round table discussion, participants provided suggestions and new ideas to improve the overall use and appearance of the project through marketing and further refinement of the curriculum and digital tools.

The National Fire Protection Association (NFPA) representation revealed the RF-DASH program follows many of the NFPA standards, specifically the 1300 standard regarding community risk analysis and reduction. In the future, participation for fire departments in the RF-DASH program may provide a means to have their departments compliant with this standard.



[Click Here for NFPA 1300 Standard](#)

---



## **WEMSA™ EMS CONFERENCE & EXPO**

**Know of Anyone Interested in a RF-DASH training?**  
November 14th  
Wisconsin Dells, WI

The master trainers will be conducting a training at the Wisconsin EMS conference in the Wisconsin Dells, November 14th. We are opening it up to accommodate 30 participants. If you know of anyone that is interested in attending a RF-DASH training, have them sign up through [WEMSA](#). We still have plenty of space, but not for long as its beginning to fill up quickly!

If you will be at the conference and would like to help at the booth, let us know. The RF-DASH booth will be there November 14th - November 16th.

Expo Hall Hours  
*Free Admission*  
Thursday, November 14th - 3pm-7pm  
Friday, November 15th - 11am-5pm  
Saturday, November 16th - 10am-3pm

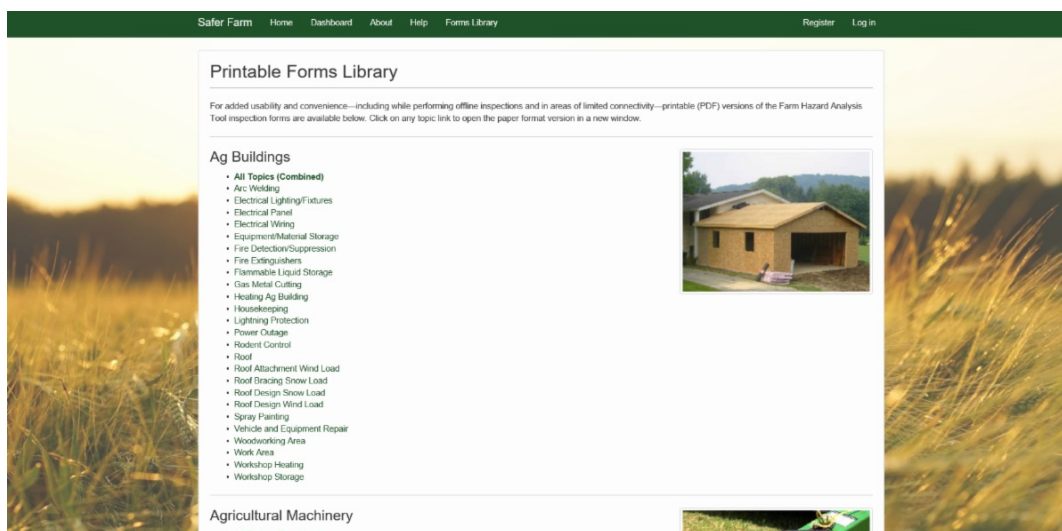
[koshalek.kyle@marshfieldresearch.org](mailto:koshalek.kyle@marshfieldresearch.org)  
715-389-3786

## SaferFarm.org Improvements

### FARM-HAT Understanding Hazard Audit Results

RANK	PROTECTION	HAZARD LEVEL	CORRECTIVE ACTIONS
1	LEAST PROTECTION	SEVERE OR HIGH	Hazard should be fixed, repaired, or improved immediately.
2			
3	MOST PROTECTION	MODERATE	Hazard should be fixed, repaired, or improved soon.
4		NEGLECTIBLE OR LOW	Hazard should be fixed, repaired, or improved when possible.
5			

We revised the item rating scale in SaferFarm.org to stay consistent with best practices in hazard analyses. Now, five represents optimum protection against a hazard and one represents the least protection. Both new and old farms entered into the system have had its scaled flipped and rescored to adjust to the new change.



We have also added a forms library that houses all of the printable 154 FARM-HAT sheets across 12 categories. Click on the forms library tab to check it out!

### Interested in training others? Don't have the resources to do so? The RF-DASH team is here for you!

If you are needing resources to support travel, mapping farms, or interested in conducting a training course, then the RF-DASH team is here to assist. Just reach out to us at [RFDASH@marshfieldresearch.org](mailto:RFDASH@marshfieldresearch.org), and we will assist you in any way we can on delivering Agricultural Safety and Health training.

Reach out to:  
[RFDASH@marshfieldresearch.org](mailto:RFDASH@marshfieldresearch.org)

Or Call 715-389-7947

## Tell Your Story

Hello! My name is Megan and I'm a Research Assistant with the National Farm Medicine Center. I am the one who conducts the interviews to help evaluate the RF-DASH Program. I just wanted to send a note along to those who may wish to share stories, pictures, videos and other information related to your work with the program. As any involvement in the program is considered an acknowledgeable impact, I encourage submission of any information you would like to share with others. As we work on building a network of shared information, this could be a way to help further that network of people. Please feel free to reach out to me with questions, concerns, assistance with the program, and to share your voice and work on the RF-DASH front.

Megan Sauer

Office: 715-389-3519

RF-DASH: 715-389-7947

[sauer.megan@marshfieldclinic.org](mailto:sauer.megan@marshfieldclinic.org)

---

## Incentives for SNA Interviews

The RF-DASH Team is Needing Your Participation!

**The RF-DASH team is conducting interviews with RF-DASH trainers.** We will be reaching out to you to schedule a time to complete the social network analysis survey. No matter your level of involvement with the project, we still want to hear from you! It shouldn't take anymore than an hour of your time. We will be having in-person and phone interviews.

We will be providing a **\$5.00** gift card to Walmart for every social network analysis survey that has been completed with a possibility of earning **up to \$20 per year**. If you have already participated in an interview, we will be following up with you for an address to send your incentive.

We thank you for your time, and for making agriculture a safer and healthier community!

Contact:

[RFDASH@marshfieldresearch.org](mailto:RFDASH@marshfieldresearch.org)

715-389-7947

---



## Have You Been Busy With RF-DASH?

If you have been busy with mapping farms, utilizing the farm hazard analysis tool sheets, and/or saferfarm, we want to hear about your progress! Click on the link below and fill

out the short five minute survey. You can complete the survey as frequently as you would like.

## RF-DASH Short Survey

## RF-DASH in the News

The logo for 'THE WESTERN PRODUCER' features the text in a bold, white, sans-serif font against a solid blue rectangular background.The logo for 'DAIRY RADIO NOW' includes a stylized black and white cow standing on a green grassy hill. Below the illustration, the words 'DAIRY RADIO' are in a large, bold, serif font, and 'NOW' is in a smaller, italicized, serif font.

VEGETABLE GROWERS NEWS

**KTIC** 107.9 BULL  
840AM / 98.3FM / 98.7FM

WISCONSIN STATE FARMER  
PART OF THE USA TODAY NETWORK

Morning AgClips  
Farming News, Harvested Daily

FRUIT GROWERS NEWS

 **Rural Radio Network**

**DAILY DISPATCH**  
Daily News for America's Fire Service

Louisiana Fire Chiefs Association

Stevens Point Journal  
A photograph showing several people in blue uniforms, likely firefighters, standing in front of a fire truck.

**Montgomery Advertiser**  
PART OF THE USA TODAY NETWORK

**Silver City Sun News**  
PART OF THE USA TODAY NETWORK

HIGH PLAINS  
**JOURNAL**  
PART OF THE USA TODAY NETWORK

### RF-DASH in Canada

<https://www.producer.com/2019/08/online-tools-help-analyze-hazards/>

### You Heard it Here!

<https://dairyradio.com/improving-farm-safety/>

<https://dairyradio.com/program-teaches-rural-9-1-1-response/>

### National Training being Heard from around the Country

[Morning Ag Clips](#)

[wisfarmer.com](http://wisfarmer.com)

[ruralradio.com](http://ruralradio.com)

[kitcradio.com](http://kitcradio.com)

[vegetablegrowersnews.com](http://vegetablegrowersnews.com)

[fruitgrowersnews.com](http://fruitgrowersnews.com)

[dailydispatch.com](http://dailydispatch.com)

[louisianafirechiefs.wordpress.com](http://louisianafirechiefs.wordpress.com)

[stevenspointjournal.com](http://stevenspointjournal.com)

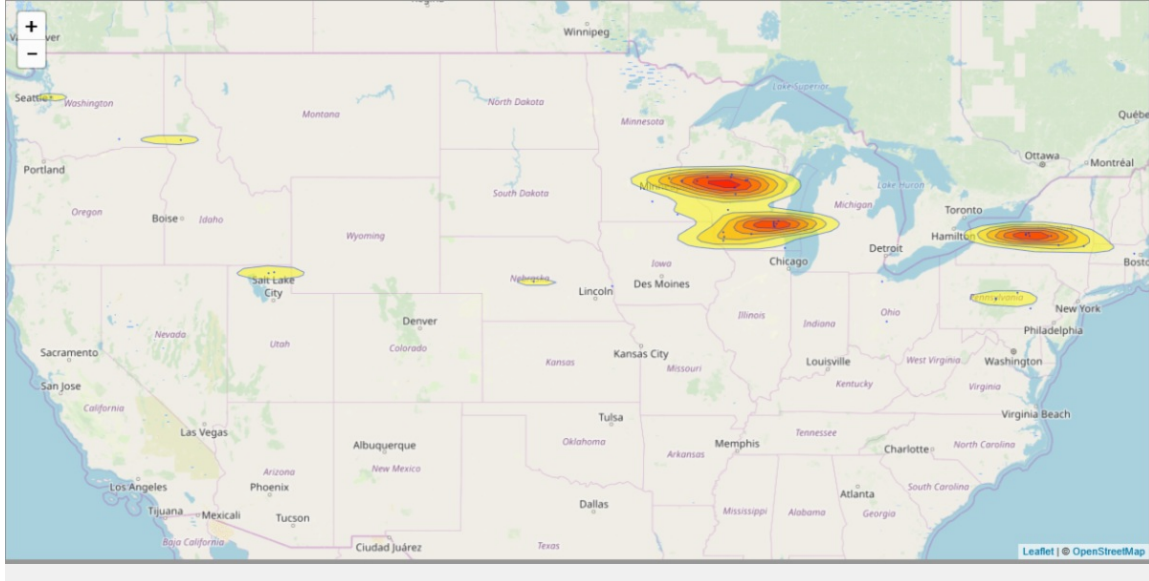
[montgomeryadvertiser.com](http://montgomeryadvertiser.com)

[scsun-news.com](http://scsun-news.com)

[hpj.com](http://hpj.com)

## Our Impact





## Current and New Project Members in Our Journey to a Safer Farm Community

### • Allenton, WI, Training Participants

- John Breuer
- Mark Steger
- Ron Naab
- Ryan Elbe
- David Beck
- Tim Herman
- Jeff Infalt
- Kevin Whelan
- Carl Wolf
- Stephanie Plaster
- William Hinkley
- Bernie Wolf



### • Wausau, WI, Training Participants

- Missy Kliebenstein
- Dan Kliebenstein
- Andrea Stelpflug
- Gary Eloranta
- Justin Athorp
- Ella Dzubay
- Jim Zwaschka
- Angie Yerke
- Andrew Yerke
- Jeff Behselich
- Kathy Fritsche
- Sara Mattke



### • Elbridge, NY, Training Participants

- Rich Lamphere
- Joshua Hairs
- Michael Plunkett
- Ryan Peters
- Timothy Knapp
- Matthew Alfultis
- Fred Laury
- Paul Czarnecki



- Daniel Hogan
- Mike Caron
- David Cawston
- Doug Blumer
- Floyd Duger

- **Menomonie, WI, Training Participants**

- Dave Pike
- Pete Hoffman
- Dan Enestvedt
- Randy Younker
- Chad Smith
- Brady Bleskacek
- Josh Romsos
- Christal Foreyt
- Tony Wold
- Kathleen Shear

- **Minneapolis, MN, Training Participants**

- Stephen Brown
- Nicholas Coble
- Jason Conklin
- Edward Kasner
- Shari Kuther
- Dave Kuther
- Erik Merrell
- Justin Norr
- Amanda Norr
- Jill Oatman
- Michael Pate
- Lisa Pfeifer
- Eric Rickenbach
- Guy Santelli
- Megan Schossow
- Albert Smith
- Pat Zulkoski
- David Bloom

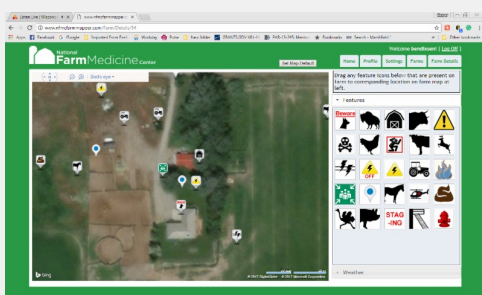


The RF-DASH Directory represents all of the individuals that have taken the RF-DASH training and are now Farm Hazard Analysts. Please contact the individuals in your region when seeking more information about the program. This includes farmers looking for emergency pre-planning, hazard analysis, and first aid training as well as other rural emergency responders wanting to be trained to be a Farm Hazard Analyst. For contact information on any of the above Farm Hazard Analysts, click on the button below for the University of Minnesota RF-DASH contact directory page.

[Click Here For The Contact Directory](#)

If you would like to be removed from the contact directory, please e-mail [RFDASH@marshfieldresearch.org](mailto:RFDASH@marshfieldresearch.org).

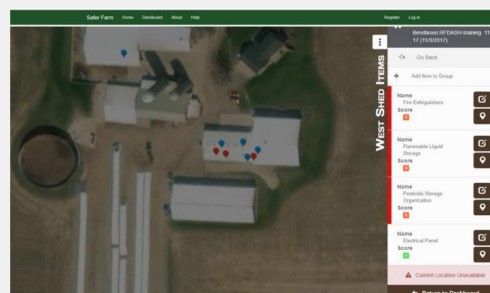
[Click Here For The RF-DASH Success Story!](#)



### Farm MAPPER

This web tool allows for digital maps of farming operations to provide emergency responders on-site information about hazards and resources. The goal is to expedite responses to farm emergencies and protect responders who may be unfamiliar with an individual farm's layout.

[Click Here For More Info](#)



### SaferFarm.org

SaferFarm.org is an ever-evolving online tool. Its development is led by the National Farm Medicine Center with the purpose of providing first-hand information about hazards, a process for evaluating hazards, and recommendations on correcting hazards.

[Click Here For More Info](#)

Brochure



**"We are here to help the farmers look at themselves, and hopefully they will eliminate some accidents. If they don't have to call firefighters/EMS, then it has been a success."**

**-Gary Eloranta**  
Battalion Chief, River Falls Fire Department



RF-DASH is funded by the Upper Midwest Agricultural Safety and Health Center (UMASH) through a cooperative agreement from the National Institute for Occupational Safety and Health (NIOSH), U54CH010170.

#### Contact Us:

To learn more about the RF-DASH program, visit:  
[umash.umn.edu/rfdash](http://umash.umn.edu/rfdash)

If you have any questions, or would like more information, please contact:  
[rfdash@marshfieldresearch.org](mailto:rfdash@marshfieldresearch.org) or call us at 715-389-7947

#### Local Fire/EMS Department Contact Information:

Fire/EMS Department:

Phone:

E-mail:



**"Farmers and Firefighters/EMS Working Together for Each Other's Safety"**

#### Help Us Help Ourselves and Your Farm

We are your local firefighters/EMS, and we want to be a resource for your farm. The RF-DASH program utilizes existing networks of firefighter/EMS in order to pre-plan emergency responses to local farms and ranches as well as provide brief farm safety consultations. These consultations are designed to **improve farm safety and reduce the number of farm emergencies.**



Photo by: [unreadable] - Courtesy of: [unreadable] - Photo by: [unreadable] - Photo by: [unreadable]



#### Pre-Planning

Emergency responders show up to an environment they may not know where the hazards or important resources are located.

Pre-planning and mapping using [www.rfdashmapper.com](http://www.rfdashmapper.com) allows emergency responders to receive access to a bird's eye view of the farm and know where all of the hazards/resources are located to **expedite response times and reduce the damage on a farm.**

#### Farm Safety Consultation

Wouldn't you like to reduce the chance of an emergency in the first place? RF-DASH trained personnel can generate a safety hazard report, using the secure mobile friendly tool at [www.safefarm.org](http://www.safefarm.org). This is friendly third party advice and not to be confused with OSHA or insurance company reports.

#### Farm First Aid

RF-DASH trainees are also equipped to provide farm first aid training for farmers, workers, and their families. This training will teach farm families the basics of how to respond if there is an emergency and increase chances of survival. This standard first aid course is tailored to the farm environment and emphasizes injury prevention knowledge.

#### Why Should I Participate?

This program is meant to partner farmers together in order to **prevent firefighter/EMS injuries in responding to farm emergencies and reduce the overall number of farm injuries and fatalities.** By allowing fire departments to become more familiar with your farm, you will be promoting the overall health and safety of your farm and the rural community.



RF-DASH trained responders are respectful and appreciative of a farmer's time. Only two hours of your time are required to assess your farm for safety. Details about your farm will **not be shared with anyone other than the fire/EMS department.** Because every farm is different, we do want to make sure that we can better respond to an emergency on every farm, which also means continuing to do what you love - farming.

**To Print Off a Copy, Click Here!**

This brochure is a tool that can be used to give information on RF-DASH to farmers, e.g. if fire departments or we need help explaining why they should be involved. It discusses how RF-DASH can help farmers by working together with their local fire/EMS to make their farms safer for both them and their families, as well as, the fire/EMS department. It can be difficult trying to describe to farmers what our intentions are when it comes to their involvement with RF-DASH on their farms. Despite our best intentions, we can be met with hesitation and/or unwillingness to be a part of the program. This is why we believe this brochure can better inform farmers on their actual involvement. If you would like to print off some copies for yourself, you can always find it on the UMASH webpage [umash.umn.edu/RFDASH](http://umash.umn.edu/RFDASH).

## Technical Issues?

If you are having any technical difficulties with Safer Farm, Farm MAPPER, etc., please reach out to [RFDASH@marshfieldresearch.org](mailto:RFDASH@marshfieldresearch.org). The RF-DASH team will help to find a solution, or connect you with someone that can.

**If you ever have any questions, don't hesitate to touch base with us! You can reach out to any of the following:**

Cap Bendixsen



Kate Barnes



Kyle Koshalek



Megan Sauer



Emily Redmond



Matt Pilz



Andrea Swenson



**RF-DASH Team:**

- [RFDASH@marshfieldresearch.org](mailto:RFDASH@marshfieldresearch.org)

- Casper Bendixsen: [bendixsen.casper@marshfieldresearch.org](mailto:bendixsen.casper@marshfieldresearch.org)
- Kate Barnes: [barnes.kate@marshfieldresearch.org](mailto:barnes.kate@marshfieldresearch.org)
- Kyle Koshalek: [koshalek.kyle@marshfieldresearch.org](mailto:koshalek.kyle@marshfieldresearch.org)
- Megan Sauer: [sauer.megan@marshfieldclinic.org](mailto:sauer.megan@marshfieldclinic.org)
- Matt Pilz: [pilz.matthew@marshfieldclinic.org](mailto:pilz.matthew@marshfieldclinic.org)
- Andrea Swenson: [swenson.andrea@marshfieldresearch.org](mailto:swenson.andrea@marshfieldresearch.org)
- Emily Redmond: [REDMOND.EMILY@marshfieldresearch.org](mailto:REDMOND.EMILY@marshfieldresearch.org)

Master Trainers:

- Matt Keifer: [mkeifer@uw.edu](mailto:mkeifer@uw.edu)
- Chief Jerry Minor: [pfd911@tds.net](mailto:pfd911@tds.net)
- Dave Hill: [psuagrescue@gmail.com](mailto:psuagrescue@gmail.com)
- Dennis Murphy: [djm13@psu.edu](mailto:djm13@psu.edu)
- Jim Carrabba: [jim.carrabba@bassett.org](mailto:jim.carrabba@bassett.org)
- Stephen Brown: [shb5060@psu.edu](mailto:shb5060@psu.edu)



RF-DASH is a research project that is funded through the Upper Midwest Agricultural Safety and Health Center (UMASH) and funded by the National Institute for Occupational Safety and Health (NIOSH), cooperative agreement U54OH010170.