

# RF-DASH Newsletter

July 2019, V. 2



## Newsletter Highlights

- A Call for Trainers
- Incentives for SNA Interviews
- National Training
- How to have a Successful Training
- Requesting Expertise
- Five minute Survey
- New Brochure



## WEMSA™ EMS CONFERENCE & EXPO

### **A Call for Trainers!**

November 14th  
Wisconsin Dells, WI

We are looking for six RF-DASH trainers to assist us in a RF-DASH training as a part of the WEMSA conference on November 14th. Our master trainers will be training a class of around 30 firefighters/EMT's. Due to the large class size, we would like to have additional trainers to help answer questions and assist throughout the day of the program. We will provide a one night stay, mileage, food on the day of the training, and a free day pass to the conference to be used before or after the day of the training. Let us know if your interested by reaching out to the following:

Phone: 715-389-7947

E-mail: [rfdash@marshfieldresearch.org](mailto:rfdash@marshfieldresearch.org)

**The RF-DASH team is conducting interviews with RF-DASH trainers.** We will be reaching out to you to schedule a time to complete the social network analysis survey. No matter your level of involvement with the project, we still want to hear from you! It shouldn't take anymore than an hour of your time. We will be having in-person and phone interviews.

We will be providing a **\$5.00** gift card to Walmart for every social network analysis survey that has been completed with a possibility of earning **up to \$20 per year**. If you have already participated in an interview, we will be following up with you for an address to send your incentive.

We thank you for your time, and for making agriculture a safer and healthier community!

Contact:

[RFDASH@marshfieldresearch.org](mailto:RFDASH@marshfieldresearch.org)

715-389-7947



### **RF-DASH National Pilot Training**

September 6th-8th  
Minneapolis, MN

The RF-DASH team would like to announce that we will be holding a national pilot training for RF-DASH in Minneapolis, MN. We are inviting many of the National Agricultural Centers and their firefighter/EMS representatives to learn more about the RF-DASH program. Our goal for the national pilot training is to see if the program model is generalizable enough to be used in other regions of the United States.

If you know of firefighters/EMT's in other states that would be great candidates, please provide us with their contact information.

Contact:

[Koshalek.kyle@marshfieldresearch.org](mailto:Koshalek.kyle@marshfieldresearch.org)

715-389-3786

---

### **What Do I Need to Have a Successful Training?**

Here is a quick guide on how to have a successful RF-DASH training:

1. Schedule training a couple months in advance. This will give individuals more time and

better opportunity to fit the training into their schedules. Weekends are normally best for the day of the training.

2. Cold calling is not always the greatest way to get individuals to attend the training. Try to find a connection with a professional within the region, and utilize them as a resource when inviting potential trainees to the training.
3. Aim for smaller class sizes. Although it would be great to get more people to attend the training, we prefer trainer trainee ratio of 1 to 5. When selecting and inviting trainees, try to get the 'aggiest' fire/EMS professionals you can.
4. When searching for a farm to conduct the hands-on training, try to find a farm within reasonable driving distance from the classroom portion of the training. Farms with old and new sections work great because they challenge pre-planning and usually have more hazards with which instruct hazard analysis.
5. Conduct a walk through on the farm before the training. Assess hazards, understand the layout of the farm, and create a relationship with the farmer.
6. We have found that the training takes up to a minimum of six hours to complete in order to hit all of the key points within the classroom portion and for proper application in the hands-on training. Anything less and you may be missing key information.
7. Collaborate with other trained farm hazard analysts to conduct the training.
8. Materials needed:
  - PowerPoint on RF-DASH program
  - Materials/ information/ contact information on the RF-DASH program
  - Paper copies of the maps and hazard analysis

If you have any questions, need resources for the training, or want us to review the material with you, reach out to the RF-DASH team and we will help you in any way we can.

Contact:

[RFDASH@marshfieldresearch.org](mailto:RFDASH@marshfieldresearch.org)

715-389-7947



## Requesting Your Expertise!

The Upper Midwest Agricultural Safety and Health Center (UMASH) is looking for a speaker for an educational seminar about fire safety on farms.

They are specifically looking for knowledge on barns/horse stables. If you are interested or would like more information, please reach out to [umash@umn.edu](mailto:umash@umn.edu).



## Have You Been Busy With RF-DASH?

If you have been busy with mapping farms, utilizing the farm hazard analysis tool sheets, and/or saferfarm, we want to hear about your progress! Click on the link below and fill out the short five minute survey. You can complete the survey as frequently as you would like.

## New Brochure

**"We are here to help the farmers look at themselves, and hopefully they will eliminate some accidents. If they don't have to call firefighters/EMS, then it has been a success."**

**-Gary Eloquent**  
Battalion Chief, River Falls Fire Department

**Contact Us:**

To learn more about the RF-DASH program, visit: [umash.umn.edu/rfdash](http://umash.umn.edu/rfdash)

If you have any questions, or would like more information, please contact: [rfdash@marshfieldresearch.org](mailto:rfdash@marshfieldresearch.org) or call us at 715-389-7947



**Help Us Help Ourselves and Your Farm**

We are your local firefighters/EMS, and we want to be a resource for your farm. The RF-DASH program utilizes existing networks of firefighters/EMS in order to pre-plan emergency responses to local farms and ranches as well as provide brief farm safety consultations. These consultations are designed to **improve farm safety and reduce the number of farm emergencies.**





**Why Should I Participate?**

This program is meant to partner farmers together in order to **prevent firefighter/EMS injuries in responding to farm emergencies and reduce the overall number of farm injuries and fatalities.** By allowing fire departments to become more familiar with your farm, you will be promoting the overall health and safety of your farm and the rural community.



**Local Fire/EMS Department Contact Information:**

Fire/EMS Department: \_\_\_\_\_

Phone: \_\_\_\_\_

E-mail: \_\_\_\_\_



**Rural Firefighters Delivering Agricultural Safety and Health**

**"Farmers and Firefighters/EMS Working Together for Each Other's Safety"**

RF-DASH is funded by the Upper Midwest Agricultural Safety and Health Center (UMASH) through a cooperative agreement from the National Institute for Occupational Safety and Health (NIOSH), USAOHS10170.

**To Print Off a Copy, Click Here!**

This brochure is a tool that can be used to give information on RF-DASH to farmers, e.g. if fire departments or we need help explaining why they should be involved. It discusses how RF-DASH can help farmers by working together with their local fire/EMS to make their farms safer for both them and their families, as well as, the fire/EMS department. It can be difficult trying to describe to farmers what our intentions are when it comes to their involvement with RF-DASH on their farms. Despite our best intentions, we can be met with hesitation and/or unwillingness to be a part of the program. This is why we believe this brochure can better inform farmers on their actual involvement. If you would like to print off some copies for yourself, you can always find it on the UMASH webpage [umash.umn.edu/RFDASH](http://umash.umn.edu/RFDASH).

**Interested in training others? Don't have the resources to do so?  
The RF-DASH team is here for you!**

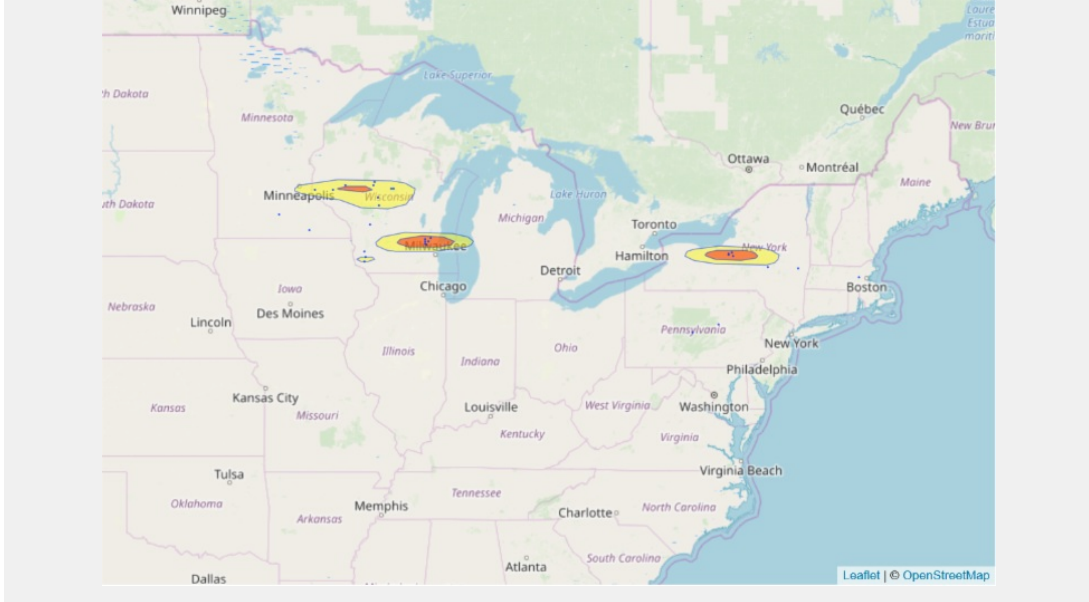
If you are needing resources to support travel, mapping farms, or interested in conducting a training course, then NFMC is here to assist. Just reach out to us at [RFDASH@marshfieldresearch.org](mailto:RFDASH@marshfieldresearch.org), and we will assist you in any way we can on delivering Agricultural Safety and Health training.

Reach out to:  
[RFDASH@marshfieldresearch.org](mailto:RFDASH@marshfieldresearch.org)

Or Call 715-389-7947

**Our Impact**





## Current and New Project Members in Our Journey to a Safer Farm Community

### • Allenton, WI Training Participants

- John Breuer
- Mark Steger
- Ron Naab
- Ryan Elbe
- David Beck
- Tim Herman
- Jeff Infalt
- Kevin Whelan
- Carl Wolf
- Stephanie Plaster
- William Hinkley
- Bernie Wolf



### • Wausau, WI Training Participants

- Missy Kliebenstein
- Dan Kliebenstein
- Andrea Stelpflug
- Gary Eloranta
- Justin Athorp
- Ella Dzubay
- Jim Zwaschka
- Angie Yerke
- Andrew Yerke
- Jeff Behselich
- Kathy Fritsche
- Sara Mattke



### • Elbridge, NY Training Participants

- Rich Lamphere
- Joshua Hairs
- Michael Plunkett
- Ryan Peters
- Timothy Knapp
- Matthew Alfultis
- Fred Laury
- Paul Czarnecki
- Daniel Hogan
- Mike Caron



- David Cawston
- Doug Blumer
- Floyd Duger
- **Menomonie, WI Training Participants**
  - Dave Pike
  - Pete Hoffman
  - Dan Enestvedt
  - Randy Younker
  - Chad Smith
  - Brady Bleskacek
  - Josh Romsos
  - Christal Foreyt
  - Tony Wold
  - Kathleen Shear

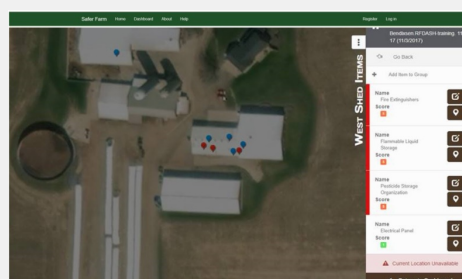
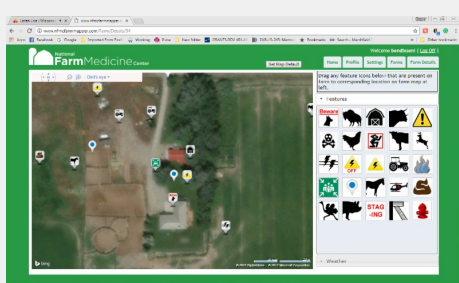
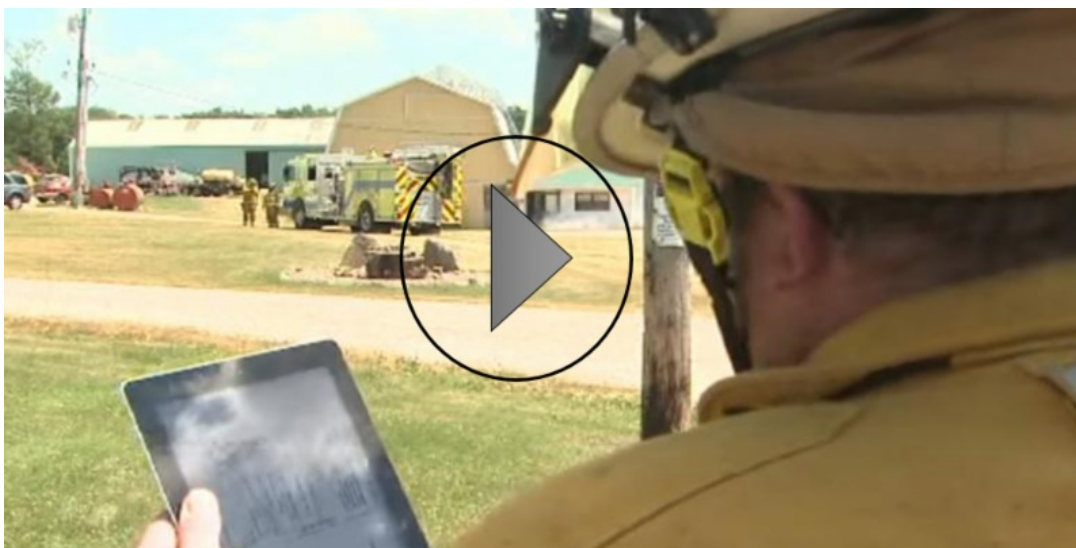


The RF-DASH Directory represents all of the individuals that have taken the RF-DASH training and are now Farm Hazard Analysts. Please contact the individuals in your region when seeking more information about the program. This includes farmers looking for emergency pre-planning, hazard analysis, and first aid training as well as other rural emergency responders wanting to be trained to be a Farm Hazard Analyst. For contact information on any of the above Farm Hazard Analysts, click on the button below for the University of Minnesota RF-DASH contact directory page.

[Click Here For The Contact Directory](#)

If you would like to be removed from the contact directory, please e-mail [RFDASH@marshfieldresearch.org](mailto:RFDASH@marshfieldresearch.org).

[Click Here For The RF-DASH Success Story!](#)



## Farm MAPPER

This web tool allows for digital maps of farming operations to provide emergency responders on-site information about hazards and resources. The goal is to expedite responses to farm emergencies and protect responders who may be unfamiliar with an individual farm's layout.

[Click Here For More Info](#)

## SaferFarm.org

SaferFarm.org is an ever-evolving online tool. Its development is led by the National Farm Medicine Center with the purpose of providing first-hand information about hazards, a process for evaluating hazards, and recommendations on correcting hazards.

[Click Here For More Info](#)

## RF-DASH in the News



Extra! Extra! Read All About It!

The RF-DASH program has been featured in the February 21, 2019 AGRI-VIEW issue! To read the article, click on the image to the left.



[Click Here To Read More!](#)

RF-DASH has a four part series articles written by Casper Bendixsen and Kathrine Barnes in *Progressive Dairyman*. It discusses what RF-DASH is all about, and how it is helping both farmers and firefighters/EMS to increase safety in agriculture.

- "Farm First Aid – Preparing for Tough Situations," *Progressive Dairyman*, pages 60-61, January 18, 2018
- "Step One in Farm Safety: Recognize and Record the Hazards," *Progressive Dairyman*, page 43, November 7, 2017
- "Use Farm MAPPER to assist, protect, prepare emergency responders," *Progressive Dairyman*, pages 28 and 30, October 19, 2017



- “Rural firefighters delivering agricultural safety and health,” *Progressive Dairyman*, pages 42-43, October 1, 2017

---

## Technical Issues?

If you are having any technical difficulties with Safer Farm, Farm MAPPER, etc., please reach out to [RFDASH@marshfieldresearch.org](mailto:RFDASH@marshfieldresearch.org). The RF-DASH team will help to find a solution, or connect you with someone that can.

---

## Would You Like To Share Farm Safety Information?

If you would like to feature something about farm safety in this newsletter, just reach out to [RFDASH@marshfieldresearch.org](mailto:RFDASH@marshfieldresearch.org). We would love to share anything that the farming and firefighter/EMS community are doing together to make agriculture safer!

---

**If you ever have any questions, don't hesitate to touch base with us! You can reach out to any of the following:**

Cap Bendixsen



Kate Barnes



Kyle Koshalek



Megan Sauer



### RF-DASH Team:

- [RFDASH@marshfieldresearch.org](mailto:RFDASH@marshfieldresearch.org)
- Casper Bendixsen: [bendixsen.casper@marshfieldresearch.org](mailto:bendixsen.casper@marshfieldresearch.org)
- Kate Barnes: [barnes.kate@marshfieldresearch.org](mailto:barnes.kate@marshfieldresearch.org)
- Kyle Koshalek: [koshalek.kyle@marshfieldresearch.org](mailto:koshalek.kyle@marshfieldresearch.org)
- Megan Sauer: [sauer.megan@marshfieldclinic.org](mailto:sauer.megan@marshfieldclinic.org)

### Master Trainers:

- Matt Keifer: [mkeifer@uw.edu](mailto:mkeifer@uw.edu)
- Chief Jerry Minor: [pfd911@tds.net](mailto:pfd911@tds.net)
- Dave Hill: [psuagrescue@gmail.com](mailto:psuagrescue@gmail.com)
- Dennis Murphy: [djm13@psu.edu](mailto:djm13@psu.edu)
- Jim Carrabba: [jim.carrabba@bassett.org](mailto:jim.carrabba@bassett.org)





RF-DASH is a research project that is funded through the Upper Midwest Agricultural Safety and Health Center (UMASH) and funded by the National Institute for Occupational Safety and Health (NIOSH), cooperative agreement U54OH010170.