

RF-DASH Newsletter

May 2021
Issue 7



Newsletter Highlights

1. **Spotlight Story-** Why I got the COVID-19 vaccine: A firefighters perspective
2. Training Manual and Website
3. RF-DASH 2.0
4. CS-CASH 11th Annual Agricultural Health and Safety Course for Medical and Safety Professionals
5. RF-DASH in the News

Spotlight Story

Why I got the COVID-19 vaccine: A firefighters perspective



[Click Here to Watch the Full Video](#)

Pittsville Fire Chief Jerry Minor did not hesitate to get immunized when the COVID-19 vaccine became available.

“Our exposure is pretty significant in emergency medical services (EMS),” said Minor, who was vaccinated Jan. 22 at Marshfield Medical Center in Marshfield. “The number of calls we get where we have probable and known COVID patients has increased significantly since the beginning of the pandemic. I don’t want to bring anything home, or bring anything back to the station.”

If COVID-19 infects a fire department, results can be disastrous, Minor said. “Most fire departments rely on volunteers and have staffing problems anyway, even without COVID. Our department can’t afford to be shorthanded.”

Minor said he has no personal safety concerns about the vaccination. “I’ve gotten the usual vaccinations throughout my life and have not had any adverse reactions.”

Minor hopes his occupational background translates into credibility when talking vaccination with skeptical neighbors and firefighter colleagues around Wisconsin.

“Wearing a mask is the first step in protecting yourself and your family,” Minor said. “I think the vaccine is the logical next step.”

Firefighters and emergency responders are held in high esteem by rural communities, according to research conducted by the National Farm Medicine Center at Marshfield Clinic Research Institute.

“Vaccines are a critical step forward for rural communities as it means COVID-19 is less likely to overwhelm already strapped rural health care systems such as EMS,” said Casper Bendixsen, center director of Farm Medicine. “The overall health of rural communities, including socially, economically and medically, will be improved by rural community members getting their vaccine when they can.”

-Marshfield Clinic Health System



Photo courtesy of Marshfield Clinic Health System

RF-DASH Training Manual and Website Coming Soon!



The RF-DASH team is excited to announce that we will be releasing a training manual and an official RF-DASH website later this summer.

The training manual will contain all of the necessary information you need to help train others in the RF-DASH program. It will cover in depth the five modules, ideas and tips on how to conduct and organize a training, how to utilize Farm MAPPER and Safer Farm, and much more.

The website will feature a multitude of features and resources that will help you find the materials and information you need for RF-DASH. We are also building a communication platform within the website that will allow members to network with one another from around the country, growing upon existing relationships and/or facilitating new ones. We hope this will further expand the RF-DASH network and programs reach, as well as provide opportunities in the future to assist you in building the program within your region.

If you have any suggestions or ideas you would like to see within the training manual or website, feel free to reach out to us at rfdash@marshfieldresearch.org.



RF-DASH 2.0

Over five years, RF-DASH has grown well beyond the Midwest. Today, the program has trained over 100 fire/EMS personnel in over 10 states with even more departments and safety individuals from around the country reaching out on how their departments can become involved. Fire/EMS, farmers, and safety professionals have shown tremendous enthusiasm for the program and have begun to expand it within their regions. As we enter the final years of the programs grant, we are looking at ways we can further expand and research the programs effectiveness by connecting emergency responders with farmers to reduce injuries and fatalities throughout our agricultural communities.

This summer, the RF-DASH team will be preparing and designing the new program that will build upon the current RF-DASH program, extending it for an additional five years. We

hope to share more updates in the coming year as we begin the grant writing process.

CS-CASH 11th Annual Agricultural Health and Safety Course: For Medical and Safety Professionals

July 13-16, 2021

The Central States Center for Agricultural Safety and Health and the UNMC College of Public Health are excited to offer the *Agricultural Health and Safety Course* **free of charge** as a thank you to those working to improve the health and safety of communities across the world. This course is designed to examine key health and safety issues specific to rural and agricultural workers. Earn up to 36.75 Continuing Education Credits by completing all 3 sessions.

Course Dates

Session A Livestream: Agricultural Health- July 13-14 (16.0 CEU)

Session B Livestream: Agricultural Safety and Prevention- July 15-16 (16.0 CEU)

Session C Online: Special Topics- Online modules starting July 13 (4.75 CEU)

For more information and to register, click here!

RF-DASH in the News

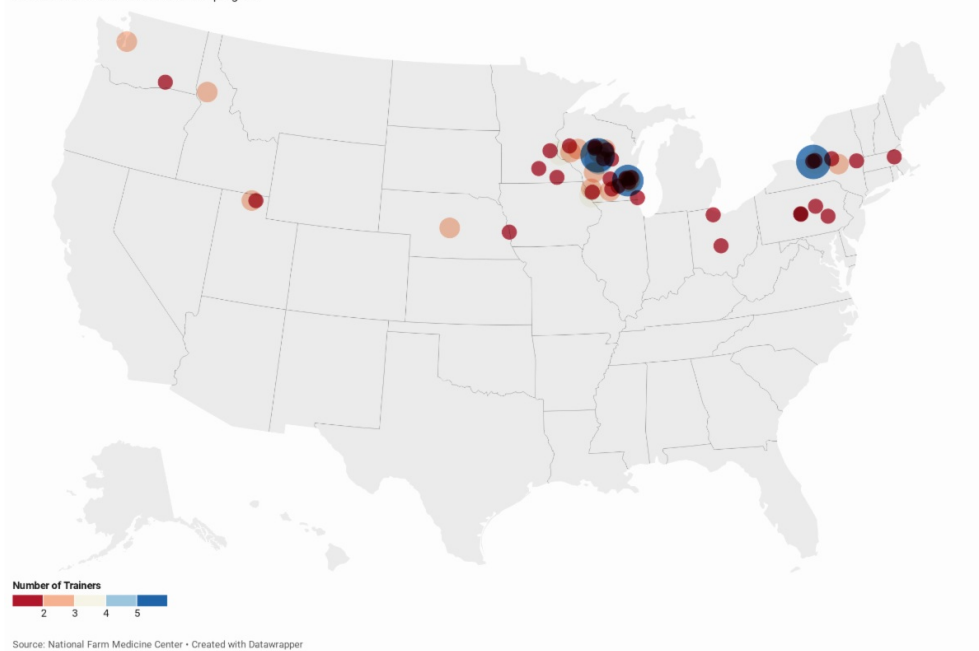
[The Independent: Farmers partner with rural firefighters to reduce injuries, fatalities](#)



Our Impact

Trained RF-DASH Personnel Locations

90 individuals trained in the RF-DASH program



Current and New Project Members in Our Journey to a Safer Farm Community

- **Allenton, WI, Training Participants**

- John Breuer
- Mark Steger
- Ron Naab
- Ryan Elbe
- David Beck
- Tim Herman
- Jeff Infalt
- Kevin Whelan
- Carl Wolf
- Stephanie Plaster
- William Hinkley
- Bernie Wolf



- **Wausau, WI, Training Participants**

- Missy Kliebenstein
- Dan Kliebenstein
- Andrea Stelpflug
- Gary Eloranta
- Justin Athorp
- Ella Dzubay
- Jim Zwaschka
- Angie Yerke
- Andrew Yerke
- Jeff Behselich
- Kathy Fritsche
- Sara Mattke



- **Elbridge, NY, Training Participants**

- Rich Lamphere
- Michael Plunkett
- Ryan Peters
- Timothy Knapp
- Matthew Alfultis



- Fred Laury
- Paul Czarnecki
- Daniel Hogan
- Mike Caron
- David Cawston
- Doug Blumer
- Floyd Duger

- **Menomonie, WI, Training Participants**

- Dave Pike
- Pete Hoffman
- Dan Enestvedt
- Randy Younker
- Chad Smith
- Brady Bleskacek
- Josh Romsos
- Christal Foreyt
- Tony Wold
- Kathleen Shear

- **Minneapolis, MN, Training Participants**

- Stephen Brown
- Nicholas Coble
- Jason Conklin
- Edward Kasner
- Shari Kuther
- Dave Kuther
- Erik Merrell
- Justin Norr
- Amanda Norr
- Jill Oatman
- Michael Pate
- Lisa Pfeifer
- Eric Rickenbach
- Guy Santelli
- Megan Schossow
- Albert Smith
- Pat Zulkoski
- David Bloom

- **Wisconsin Dells, Training Participants**

- Vern Butzine
- Laurel Carey
- Tim Carey
- Jayce Harder
- Jessie Heisz
- Tom McCarrier
- Jason Olds
- Peter Pomerening
- Bill Raflik
- Matthew Schleusner
- Warren Stanke



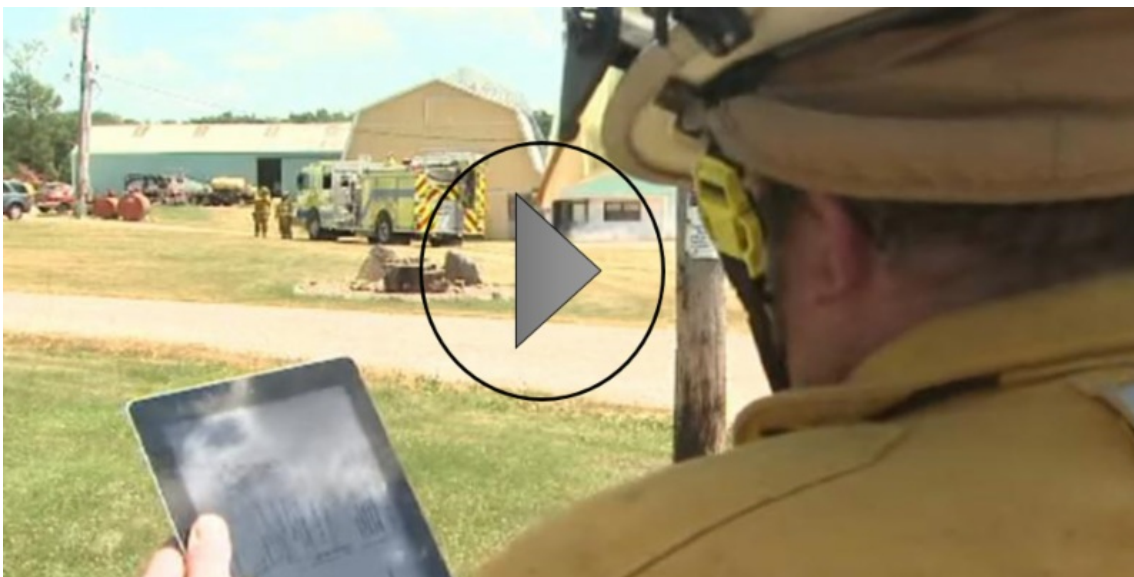
The RF-DASH Directory represents all of the individuals that have taken the RF-DASH training and are now Farm Hazard Analysts. Please contact the individuals in your region when seeking more information about the program. This includes farmers looking for emergency pre-planning, hazard analysis, and first aid training as well as other rural

emergency responders wanting to be trained to be a Farm Hazard Analyst. For contact information on any of the above Farm Hazard Analysts, click on the button below for the University of Minnesota RF-DASH contact directory page.

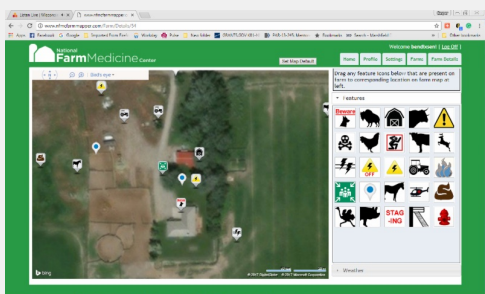
[Click Here For The Contact Directory](#)

If you would like to be removed from the contact directory, please e-mail RFDASH@marshfieldresearch.org.

[Click Here For The RF-DASH 2021 Success Story!](#)

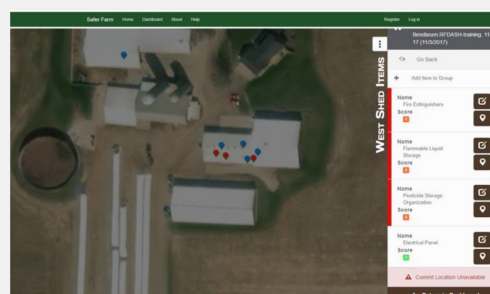


[Visit rfdash.org](http://rfdash.org) For More Information



Farm MAPPER

This web tool allows for digital maps of farming operations to provide emergency responders on-site information about hazards and resources. The goal is to expedite responses to farm emergencies and protect responders who may be unfamiliar with an individual farms



SaferFarm.org

SaferFarm.org is an ever-evolving online tool. Its development is led by the National Farm Medicine Center with the purpose of providing first-hand information about hazards, a process for evaluating hazards, and recommendations on correcting hazards.

layout.

[Click Here For More Info](#)

[Click Here For More Info](#)

Technical Issues?

If you are having any technical difficulties with Safer Farm, Farm MAPPER, etc., please reach out to RFDASH@marshfieldresearch.org. The RF-DASH team will help to find a solution, or connect you with someone that can.

If you ever have any questions, don't hesitate to touch base with us! You can reach out to any of the following:

Cap Bendixsen



Kate Barnes



Kyle Koshalek



Megan Sauer



Emily Redmond



Matt Pilz



Andrea Swenson



RF-DASH Team:

- RFDASH@marshfieldresearch.org
- Casper Bendixsen: bendixsen.casper@marshfieldresearch.org
- Kate Barnes: barnes.kate@marshfieldresearch.org
- Kyle Koshalek: koshalek.kyle@marshfieldresearch.org
- Megan Sauer: sauer.megan@marshfieldresearch.org
- Matt Pilz: pilz.matthew@marshfieldclinic.org
- Andrea Swenson: swenson.andrea@marshfieldresearch.org

Master Trainers:

- Matt Keifer: mkeifer@uw.edu
- Chief Jerry Minor: pf911@tds.net
- Dennis Murphy: djm13@psu.edu
- Jim Carrabba: jim.carrabba@bassett.org
- Stephen Brown: shb5060@psu.edu



RF-DASH is dedicated to improving safety on farms across the United States by bringing together farmers and local first responders.

By connecting farmers with their local emergency service teams, RF-DASH gives them the means to build a safer community.

The program is designed to give the community peace of mind by building trust and sharing access to necessary tools and knowledge.

We partner with institutions that offer industry-leading tools and technology to help achieve the goal of increasing farm safety.

Partners include: Centers for Disease Control and Prevention (CDC), Marshfield Clinic Research Institute, National Farm Medicine Center, Upper Midwest Agricultural Safety and Health Center (UMASH) and local fire departments.

RF-DASH is a research project that is funded through the Upper Midwest Agricultural Safety and Health Center (UMASH) and funded by the National Institute for Occupational Safety and Health (NIOSH), cooperative agreement U54OH010170.