

RF-DASH Newsletter

August 2020
Issue 6



Newsletter Highlights

- Spotlight Story - Re-Branding RF-DASH
- UMASH Virtual Safety Expo

Spotlight Story



Re-Branding RF-DASH

Over the years, the RF-DASH program has been receiving a lot of positive feedback as well as suggestions to improve the program as it continues to grow nationally. Specifically, we have received helpful feedback from the trainers of RF-DASH in regards to the programs branding.

We are excited to announce that over the past six months, the RF-DASH program has been working with a marketing company, broadhead, to refine the look and feel of the program. Using an outside marketing company has allowed the program to obtain a unique perception about how to better present RF-DASH to its target audiences through its mission of improving rural health and safety for both farmers and firefighters/EMS.

Having broadhead review the RF-DASH program allowed for an evaluation by an "outside set of eyes", which in turn has shed an entirely new light onto this up and coming program. – Jerry Minor, Pittsville Fire Chief

The program has been built by many organizations and individuals that have contributed their time and expertise in making what the program is today. As all of these organizations have played a part in its success, we wanted to encapsulate this under one umbrella, through the RF-DASH logo, that we hope everyone will see themselves in.

As the program continues to focus on sustainability, the RF-DASH team will work on building resources and content to equip trainers with the tools to train new members and connect with local farmers on ways to improve the overall safety of their operations.

If you have any suggestions or ideas that would be great for RF-DASH, don't hesitate to reach out to us!



Individualism. Guts. Dedication. Firefighters and farmers may have different jobs, but the job requirements are the same. So we're bringing both together to make the farm safer. Rural firefighters Delivering Agriculture Safety and Health (RF-DASH) partners with you for hazard analysis, farm first-aid training and prevention strategies at no cost. Because no team is better equipped than the one with both of us on it.

Sign up at <http://rfdash.org/>.

UMASH ONLINE EXPO August 11 - 13, 2020

A 20/20 LOOK AT AG HEALTH, SAFETY AND WELLNESS



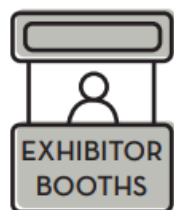
UMASH ONLINE EXPO:

A **20/20** LOOK AT AG HEALTH,
SAFETY AND WELLNESS

AUGUST 11-13, 2020

Visit our **FREE ONLINE** expo,
watch live safety demos, hear
from health experts and gather
resources from our exhibitors.

PARTICIPATE IN OUR ONLINE ACTIVITIES



umash.umn.edu/umash-online-expo



UPPER MIDWEST AGRICULTURAL SAFETY AND HEALTH CENTER
UMASH is funded by the National Institute for Occupational Safety and
Health cooperative agreement U54OH010170 (2011-2021)

GET CONNECTED!
umash.umn.edu
  

[Click here to read more: UMASH Online Expo](https://umash.umn.edu/umash-online-expo)

COVID-19 Resources and Information For Farmers and Fire/EMS

[Click here: National Farm Medicine Center COVID-19 Resources](#)

[Click here: CDC.gov/coronavirus/Fire/EMS](https://www.cdc.gov/coronavirus/Fire/EMS)

[Click here: National Volunteer Fire Council](#)

[NFPA Responds to The Coronavirus](#)

Incentives for SNA Interviews!

The RF-DASH Team is Needing Your Participation!

The RF-DASH team is still conducting interviews with RF-DASH trainers! We will be reaching out to you to schedule a time to complete the social network analysis survey. No matter your level of involvement with the project, we still want to hear from you! The call will take about 30 minutes.

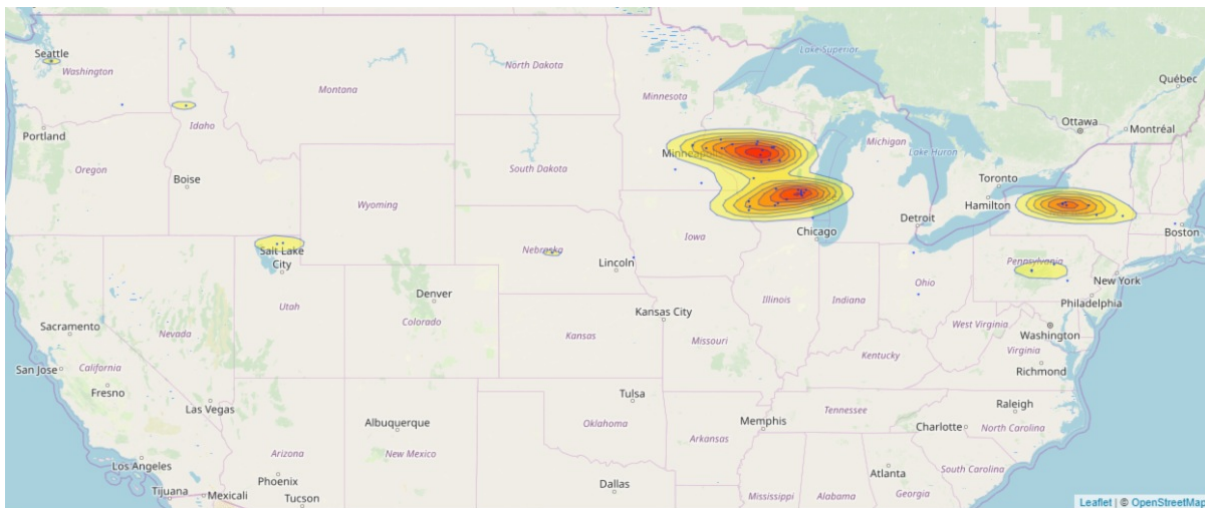
We will be providing a **\$5.00** electronic gift card to Amazon for every social network analysis survey that has been completed.

We thank you for your time, and for making agriculture a safer and healthier community!

Contact:
RFDASH@marshfieldresearch.org

715-389-7947

Our Impact



Current and New Project Members in Our Journey to a Safer Farm Community

• Allenton, WI, Training Participants

- John Breuer
- Mark Steger
- Ron Naab
- Ryan Elbe
- David Beck
- Tim Herman
- Jeff Infalt
- Kevin Whelan
- Carl Wolf
- Stephanie Plaster
- William Hinkley
- Bernie Wolf



- **Wausau, WI, Training Participants**

- Missy Kliebenstein
- Dan Kliebenstein
- Andrea Stelpflug
- Gary Eloranta
- Justin Athorp
- Ella Dzubay
- Jim Zwaschka
- Angie Yerke
- Andrew Yerke
- Jeff Behselich
- Kathy Fritsche
- Sara Mattke



- **Elbridge, NY, Training Participants**

- Rich Lamphere
- Michael Plunkett
- Ryan Peters
- Timothy Knapp
- Matthew Alfultis
- Fred Laury
- Paul Czarnecki
- Daniel Hogan
- Mike Caron
- David Cawston
- Doug Blumer
- Floyd Duger



- **Menomonie, WI, Training Participants**

- Dave Pike
- Pete Hoffman
- Dan Enestvedt
- Randy Younker
- Chad Smith
- Brady Bleskacek
- Josh Romsos
- Christal Foreyt
- Tony Wold
- Kathleen Shear



- **Minneapolis, MN, Training Participants**

- Stephen Brown
- Nicholas Coble
- Jason Conklin
- Edward Kasner
- Shari Kuther
- Dave Kuther
- Erik Merrell
- Justin Norr
- Amanda Norr
- Jill Oatman
- Michael Pate
- Lisa Pfeifer
- Eric Rickenbach
- Guy Santelli
- Megan Schossow
- Albert Smith



- Pat Zulkoski
- David Bloom
- **Wisconsin Dells, Training Participants**
 - Vern Butzine
 - Laurel Carey
 - Tim Carey
 - Jayce Harder
 - Jessie Heisz
 - Tom McCarrier
 - Jason Olds
 - Peter Pomerening
 - Bill Raflik
 - Matthew Schleusner
 - Warren Stanke

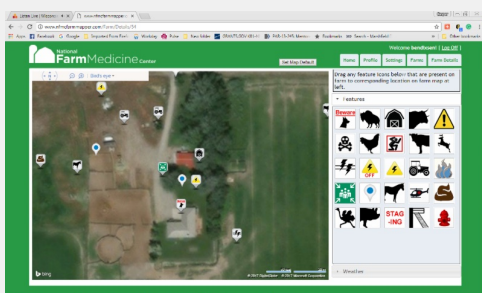


The RF-DASH Directory represents all of the individuals that have taken the RF-DASH training and are now Farm Hazard Analysts. Please contact the individuals in your region when seeking more information about the program. This includes farmers looking for emergency pre-planning, hazard analysis, and first aid training as well as other rural emergency responders wanting to be trained to be a Farm Hazard Analyst. For contact information on any of the above Farm Hazard Analysts, click on the button below for the University of Minnesota RF-DASH contact directory page.

[Click Here For The Contact Directory](#)

If you would like to be removed from the contact directory, please e-mail RFDASH@marshfieldresearch.org.

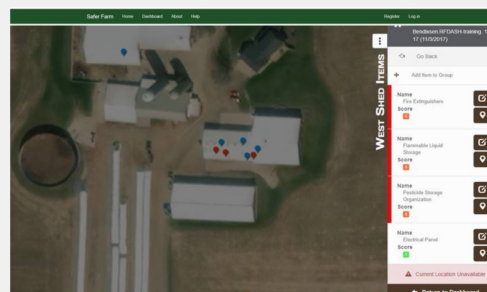
[Click Here For The RF-DASH 2020 Success Story!](#)



Farm MAPPER

This web tool allows for digital maps of farming operations to provide emergency responders on-site information about hazards and resources. The goal is to expedite responses to farm emergencies and protect responders who may be unfamiliar with an individual farms layout.

[Click Here For More Info](#)



SaferFarm.org

SaferFarm.org is an ever-evolving online tool. Its development is led by the National Farm Medicine Center with the purpose of providing first-hand information about hazards, a process for evaluating hazards, and recommendations on correcting hazards.

[Click Here For More Info](#)

Brochure



To Print Off a Copy, Click Here!

This brochure is a tool that can be used to give information on RF-DASH to farmers, e.g. if fire departments need help explaining why they should be involved. It discusses how RF-DASH can help farmers by working together with their local fire/EMS to make their farms safer for both them and their families, as well as, the fire/EMS department. It can be difficult trying to describe to farmers what our intentions are when it comes to their involvement with RF-DASH on their farms. Despite best intentions, fire/EMS may be met with hesitation and/or unwillingness to be a part of the RF-DASH program. This is why this brochure can better inform farmers on their actual involvement. If you would like to print off some copies for yourself, you can always find it on the UMASH webpage umash.umn.edu/RFDASH.

Technical Issues?

If you are having any technical difficulties with Safer Farm, Farm MAPPER, etc., please reach out to RFDASH@marshfieldresearch.org. The RF-DASH team will help to find a solution, or connect you with someone that can.

If you ever have any questions, don't hesitate to touch base with us! You can reach out to any of the following:

Cap Bendixsen



Kate Barnes



Kyle Koshalek



Megan Sauer



Emily Redmond



Matt Pilz



Andrea Swenson



RF-DASH Team:

- RFDASH@marshfieldresearch.org
- Casper Bendixsen: bendixsen.casper@marshfieldresearch.org
- Kate Barnes: barnes.kate@marshfieldresearch.org
- Kyle Koshalek: koshalek.kyle@marshfieldresearch.org
- Megan Sauer: sauer.megan@marshfieldresearch.org
- Matt Pilz: pilz.matthew@marshfieldclinic.org
- Andrea Swenson: swenson.andrea@marshfieldresearch.org
- Emily Redmond: REDMOND.EMILY@marshfieldresearch.org

Master Trainers:

- Matt Keifer: mkeifer@uw.edu
- Chief Jerry Minor: pfd911@tds.net
- Dave Hill: psuagrescue@gmail.com
- Dennis Murphy: djm13@psu.edu
- Jim Carrabba: jim.carrabba@bassett.org
- Stephen Brown: shb5060@psu.edu



RF-DASH is dedicated to improving safety on farms across the United States by bringing together farmers and local first responders.

By connecting farmers with their local emergency service teams, RF-DASH gives them the means to build a safer community.

The program is designed to give the community peace of mind by building trust and sharing access to necessary tools and knowledge.

We partner with institutions that offer industry-leading tools and technology to help achieve the goal of increasing farm safety.

Partners include: Centers for Disease Control and Prevention (CDC), Marshfield Clinic Research Institute, National Farm Medicine Center, Upper Midwest Agricultural Safety and Health Center (UMASH) and local fire departments.

RF-DASH is a research project that is funded through the Upper Midwest Agricultural Safety and Health Center (UMASH) and funded by the National Institute for Occupational Safety and Health (NIOSH), cooperative agreement U54OH010170.