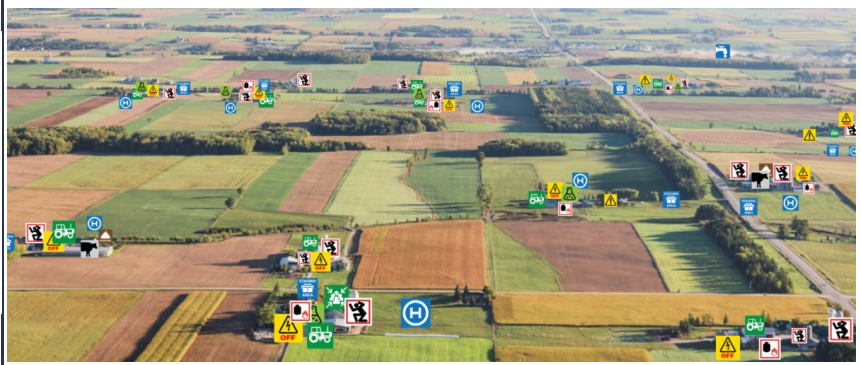


# RF-DASH Newsletter

May 2020

Issue 5



## Newsletter Highlights

- Spotlight Story - Successful Farming Covering RF-DASH
- Be Sure to Take Your Own Advice
- CS-CASH 2020 Agricultural Health and Safety Course- Free!
- COVID-19 Resources and Information
- RF-DASH SNA Interviews

## Spotlight Story

### SF Successful Farming

NEWS MARKETS WEATHER MACHINERY CROPS TECHNOLOGY FARM MANAGEMENT LIVESTOCK FAMILY [SUBSCRIBE](#)

#### TIP OF THE DAY

##### Free Up Two Hands for Oil Changes

To get around the mast on my loader for access to the tractor's engine oil fill port, I use a large plastic funnel, 18 inches of 1-inch... [read more](#)



#### TALK IN MARKETING

##### Floor Talk, May 6, 2020

At 8:48am: In early trading, the July corn futures are 3/4¢ lower at \$3.16 1/4. Dec. corn futures are 1... [\[More\]](#)

Author: [marketeye](#) Posted: 05-06-2020

#### PP

There are some that if given the opportunity this year, are going to take PP on everything possible. The markets... [\[More\]](#)

Author: [wrightcattle](#) Posted: 05-05-2020

All Talk

[Home](#) • [Family](#) • [Health and Safety](#)

## FIREFIGHTERS AND FARMERS TACKLE SAFETY TOGETHER

WHEN FIREFIGHTERS AND FARMERS WORK TOGETHER, THEY CAN ALL BE BETTER PREPARED IN CASE OF AN EMERGENCY.

By Lisa Foust Prater  
5/1/2020

Farmers aren't known for their tendency to easily place their trust in others. A 2015 study by the Upper Midwest Agricultural Safety and Health Center (UMASH), a collaboration of five research and healthcare institutions, found they are most likely to trust each other and family the most, but another group with a very high rating was firefighters.

This discovery hit home for Casper Bendixsen, director of the National Farm Medicine Center, a UMASH partner. "We were looking for a way to bring information about health and safety



## Successful Farming

## **FIREFIGHTERS AND FARMERS TACKLE SAFETY TOGETHER**

WHEN FIREFIGHTERS AND FARMERS WORK TOGETHER, THEY CAN ALL BE BETTER PREPARED IN CASE OF AN EMERGENCY.

Successful Farming is a nationally recognized agriculture magazine that has been around since the early 1900's. It has been bringing information to farmers to help improve life and their business on the farm.

Successful Farming wrote a great article on RF-DASH, interviewing Casper Bendixsen, on the ways fire and EMS can be the key connectors to improving safety and prevention on farms throughout our communities.

[Click here to read about Successful Farming - Firefighters and Farmers Tackle Safety Together](#)

### **Be Sure to Take Your Own Advice**

Being a fire/EMS member, sometimes we may forget to take our own advice when it comes to safety and health. Safety consciousness is a full time job. Thanks to [Ag Injury News](#) for finding the article.



[Click here to read - Brooke-Alvinston volunteer firefighter killed in crash with combine](#)

### **CS-CASH 2020 Agricultural Health and Safety Course**



To thank our health care providers, emergency services personnel, and those who continue to provide essential services during the COVID-19 pandemic, CS-CASH is offering the

## **2020 Agricultural Health and Safety Course**

**Free of Charge**

**Live via Zoom July 14 - 17, 2020**

**Online (on-demand) July 14 - August 14, 2020**

### **DETAILS:**

- Earn up to 36.75 hours of AMA PRA, Nursing, EMS, Continuing Education credit at no cost.
- The course will be offered live via Zoom July 14-15 (Session A) and July 16-17 (Session B), with online sessions available on demand through August 14, 2020.
- **Registration is required:** Go to [www.unmc.edu/cce/aghealth](http://www.unmc.edu/cce/aghealth)
- Students taking this course for academic credit with the UNMC College of Public Health, must register with the college and pay course fees to receive academic credit.
- The course textbook can be purchased during registration for \$90. All other course materials will be offered at no cost and will be mailed to you (at the address listed on the registration form) one week prior to the course.
- If you had previously paid for your registration, you will receive a full refund in the same form of payment that your registration was received.

### **AGENDA:**

<https://www.unmc.edu/cce/catalog/clinicmed/aghealth/agenda.pdf>

### **CREDIT:**

This live activity has been approved for AMA PRA Category 1 Credit™.

The University of Nebraska Medical Center College of Nursing Continuing Nursing Education is accredited with distinction as a provider of nursing continuing professional development by the American Nurses Credentialing Center's Commission on Accreditation.

EMS Continuing Education Awarded

*This course is supported in part by NIOSH AFF grant # 5U54OH010162*

**Please Plan on Joining Us!**

***Please forward this to health care providers, EMS personnel, safety and health professionals, and others who would benefit from taking this course.***

For questions please contact Ellen Duysen  
[ellen.duysen@unmc.edu](mailto:ellen.duysen@unmc.edu)

**COVID-19 Resources and Information For Farmers and Fire/EMS**

**Click here: National Farm Medicine Center COVID-19 Resources**

[Click here: CDC.gov/coronavirus/Fire/EMS](https://www.cdc.gov/coronavirus/Fire/EMS)

[Click here: National Volunteer Fire Council](#)

## Incentives for SNA Interviews!

The RF-DASH Team is Needing Your Participation!

**The RF-DASH team is still conducting interviews with RF-DASH trainers!** We will be reaching out to you to schedule a time to complete the social network analysis survey. No matter your level of involvement with the project, we still want to hear from you! The call will take about 30 minutes.

We will be providing a **\$5.00** electronic gift card to Amazon for every social network analysis survey that has been completed.

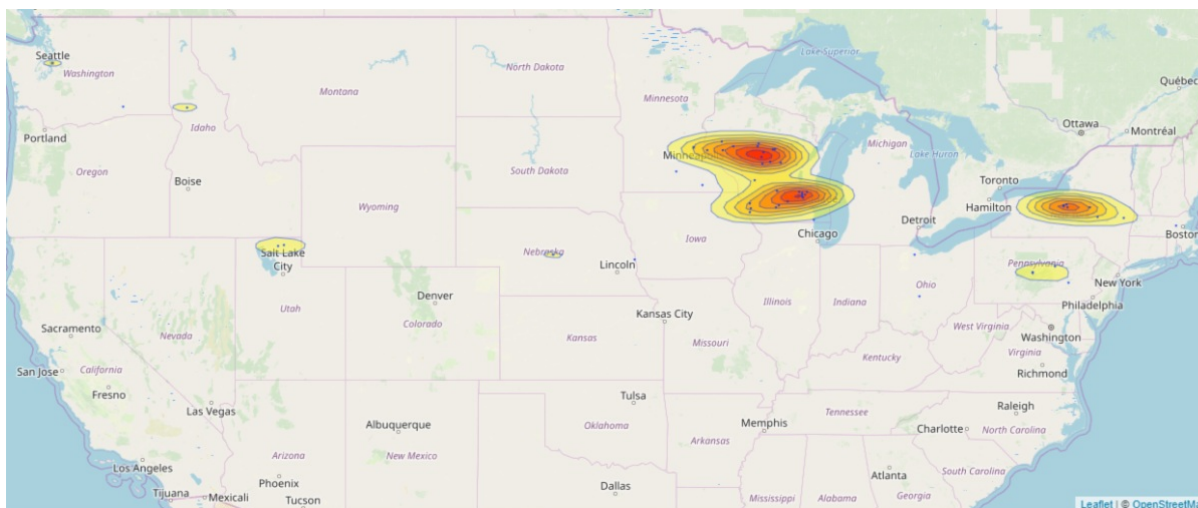
We thank you for your time, and for making agriculture a safer and healthier community!

Contact:

[RFDASH@marshfieldresearch.org](mailto:RFDASH@marshfieldresearch.org)

715-389-7947

## Our Impact



### Current and New Project Members in Our Journey to a Safer Farm Community

- **Allenton, WI, Training Participants**
  - John Breuer
  - Mark Steger
  - Ron Naab
  - Ryan Elbe



- David Beck
- Tim Herman
- Jeff Infalt
- Kevin Whelan
- Carl Wolf
- Stephanie Plaster
- William Hinkley
- Bernie Wolf



- **Wausau, WI, Training Participants**

- Missy Kliebenstein
- Dan Kliebenstein
- Andrea Stelpflug
- Gary Eloranta
- Justin Athorp
- Ella Dzubay
- Jim Zwaschka
- Angie Yerke
- Andrew Yerke
- Jeff Behselich
- Kathy Fritsche
- Sara Mattke



- **Elbridge, NY, Training Participants**

- Rich Lamphere
- Michael Plunkett
- Ryan Peters
- Timothy Knapp
- Matthew Alfultis
- Fred Laury
- Paul Czarnecki
- Daniel Hogan
- Mike Caron
- David Cawston
- Doug Blumer
- Floyd Duger



- **Menomonie, WI, Training Participants**

- Dave Pike
- Pete Hoffman
- Dan Enestvedt
- Randy Younker
- Chad Smith
- Brady Bleskacek
- Josh Romsos
- Christal Foreyt
- Tony Wold
- Kathleen Shear



- **Minneapolis, MN, Training Participants**

- Stephen Brown
- Nicholas Coble
- Jason Conklin
- Edward Kasner
- Shari Kuther
- Dave Kuther
- Erik Merrell
- Justin Norr

- Amanda Norr
- Jill Oatman
- Michael Pate
- Lisa Pfeifer
- Eric Rickenbach
- Guy Santelli
- Megan Schossow
- Albert Smith
- Pat Zulkoski
- David Bloom



- **Wisconsin Dells, Training Participants**

- Vern Butzine
- Laurel Carey
- Tim Carey
- Jayce Harder
- Jessie Heisz
- Tom McCarrier
- Jason Olds
- Peter Pomerening
- Bill Raflik
- Matthew Schleusner
- Warren Stanke

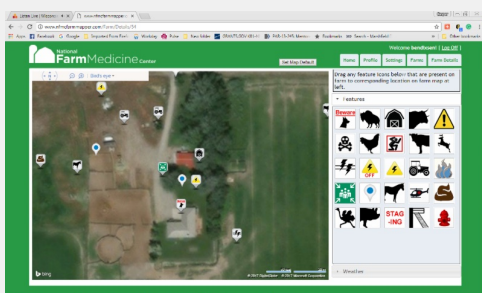


The RF-DASH Directory represents all of the individuals that have taken the RF-DASH training and are now Farm Hazard Analysts. Please contact the individuals in your region when seeking more information about the program. This includes farmers looking for emergency pre-planning, hazard analysis, and first aid training as well as other rural emergency responders wanting to be trained to be a Farm Hazard Analyst. For contact information on any of the above Farm Hazard Analysts, click on the button below for the University of Minnesota RF-DASH contact directory page.

[Click Here For The Contact Directory](#)

If you would like to be removed from the contact directory, please e-mail [RFDASH@marshfieldresearch.org](mailto:RFDASH@marshfieldresearch.org).

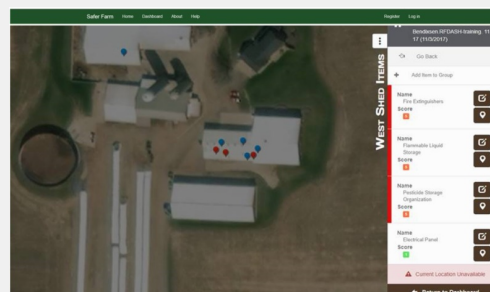
[Click Here For The RF-DASH Success Story!](#)



### Farm MAPPER

This web tool allows for digital maps of farming operations to provide emergency responders on-site information about hazards and resources. The goal is to expedite responses to farm emergencies and protect responders who may be unfamiliar with an individual farms layout.

[Click Here For More Info](#)



### SaferFarm.org

SaferFarm.org is an ever-evolving online tool. Its development is led by the National Farm Medicine Center with the purpose of providing first-hand information about hazards, a process for evaluating hazards, and recommendations on correcting hazards.

[Click Here For More Info](#)

Brochure

**"We are here to help the farmers look at themselves, and hopefully they will eliminate some accidents. If they don't have to call firefighters/EMS, then it has been a success."**

**-Gary Ekoranta**  
Battalion Chief, River Falls Fire Department



RF-DASH is funded by the Upper Midwest Agricultural Safety and Health Center (UMASH) through a cooperative agreement from the National Institute for Occupational Safety and Health (NIOSH), U54CH010170.

#### Contact Us:

To learn more about the RF-DASH program, visit:  
[umash.umn.edu/rfdash](http://umash.umn.edu/rfdash)

If you have any questions, or would like more information, please contact:

[rfdash@marshfieldresearch.org](mailto:rfdash@marshfieldresearch.org) or call us at 715-389-7947

#### Local Fire/EMS Department Contact Information:

Fire/EMS Department:

Phone:

E-mail:



**"Farmers and Firefighters/EMS Working Together for Each Other's Safety"**

#### Help Us Help Ourselves and Your Farm

We are your local firefighters/EMS, and we want to be a resource for your farm. The RF-DASH program utilizes existing networks of firefighter/EMS in order to pre-plan emergency responses to local farms and ranches as well as provide brief farm safety consultations. These consultations are designed to **improve farm safety and reduce the number of farm emergencies.**



Photo by: K. Schmitt, courtesy of: Marshfield Research Center, ©2014 RF-DASH



#### Pre-Planning

Emergency responders show up to an environment they may not know where the hazards or important resources are located.

Pre-planning and mapping using

[www.rfdashmapproject.com](http://www.rfdashmapproject.com) allows emergency responders to receive access to a bird's eye view of the farm and know where all of the hazards/resources are located to **expedite response times and reduce the damage on a farm.**

#### Farm Safety Consultation

Wouldn't you like to reduce the chance of an emergency in the first place? RF-DASH trained personnel can generate a safety hazard report, using the secure mobile friendly tool at [www.safefarm.org](http://www.safefarm.org). This is friendly third party advice and not to be confused with OSHA or insurance company reports.

#### Farm First Aid

RF-DASH trainees are also equipped to provide farm first aid training for farmers, workers, and their families. This training will teach farm families the basics of how to respond if there is an emergency and increase chances of survival. This standard first aid course is tailored to the farm environment and emphasizes injury prevention knowledge.

#### Why Should I Participate?

This program is meant to partner farmers together in order to **prevent firefighter/EMS injuries in responding to farm emergencies and reduce the overall number of farm injuries and fatalities.** By allowing fire departments to become more familiar with your farm, you will be promoting the overall health and safety of your farm and the rural community.



RF-DASH trained responders are respectful and appreciative of a farmer's time. Only two hours of your time are required to assess your farm for safety. Details about your farm will **not be shared with anyone other than the fire/EMS department.** Because every farm is different, we do want to make sure that we can better respond to an emergency on every farm, which also means continuing to do what you love - farming.

**To Print Off a Copy, Click Here!**

This brochure is a tool that can be used to give information on RF-DASH to farmers, e.g. if fire departments need help explaining why they should be involved. It discusses how RF-DASH can help farmers by working together with their local fire/EMS to make their farms safer for both them and their families, as well as, the fire/EMS department. It can be difficult trying to describe to farmers what our intentions are when it comes to their involvement with RF-DASH on their farms. Despite best intentions, fire/EMS may be met with hesitation and/or unwillingness to be a part of the RF-DASH program. This is why this brochure can better inform farmers on their actual involvement. If you would like to print off some copies for yourself, you can always find it on the UMASH webpage

[umash.umn.edu/RFDASH](http://umash.umn.edu/RFDASH).

## Technical Issues?

If you are having any technical difficulties with Safer Farm, Farm MAPPER, etc., please reach out to [RFDASH@marshfieldresearch.org](mailto:RFDASH@marshfieldresearch.org). The RF-DASH team will help to find a solution, or connect you with someone that can.

**If you ever have any questions, don't hesitate to touch base with us! You can reach out to any of the following:**



Cap Bendixsen



Kate Barnes



Kyle Koshalek



Megan Sauer



Emily Redmond



Matt Pilz



Andrea Swenson



#### RF-DASH Team:

- [RFDASH@marshfieldresearch.org](mailto:RFDASH@marshfieldresearch.org)
- Casper Bendixsen: [bendixsen.casper@marshfieldresearch.org](mailto:bendixsen.casper@marshfieldresearch.org)
- Kate Barnes: [barnes.kate@marshfieldresearch.org](mailto:barnes.kate@marshfieldresearch.org)
- Kyle Koshalek: [koshalek.kyle@marshfieldresearch.org](mailto:koshalek.kyle@marshfieldresearch.org)
- Megan Sauer: [sauer.megan@marshfieldresearch.org](mailto:sauer.megan@marshfieldresearch.org)
- Matt Pilz: [pilz.matthew@marshfieldclinic.org](mailto:pilz.matthew@marshfieldclinic.org)
- Andrea Swenson: [swenson.andrea@marshfieldresearch.org](mailto:swenson.andrea@marshfieldresearch.org)
- Emily Redmond: [REDMOND.EMILY@marshfieldresearch.org](mailto:REDMOND.EMILY@marshfieldresearch.org)

#### Master Trainers:

- Matt Keifer: [mkeifer@uw.edu](mailto:mkeifer@uw.edu)
- Chief Jerry Minor: [pfd911@tds.net](mailto:pfd911@tds.net)
- Dave Hill: [psuagrescue@gmail.com](mailto:psuagrescue@gmail.com)
- Dennis Murphy: [djm13@psu.edu](mailto:djm13@psu.edu)
- Jim Carrabba: [jim.carrabba@bassett.org](mailto:jim.carrabba@bassett.org)
- Stephen Brown: [shb5060@psu.edu](mailto:shb5060@psu.edu)



RF-DASH is a research project that is funded through the Upper Midwest Agricultural Safety and Health Center (UMASH) and funded by the National Institute for Occupational Safety and Health (NIOSH), cooperative agreement U54OH010170.