



Welcome to the RF-DASH newsletter! Every quarter we will be sending out a newsletter welcoming all of our new comers to the group, as well as, showing new and exciting information in our combined efforts of making agriculture safer.

### **Newsletter Highlights**

- Mental Health First Aid For Rural Wisconsin training
- RF-DASH appears in AGRI-VIEW and Progressive Dairyman
- Social Network Analysis Interviews

**[Click Here For The RF-DASH Success Story!](#)**



**Click on the image above for the RF-DASH highlight video**

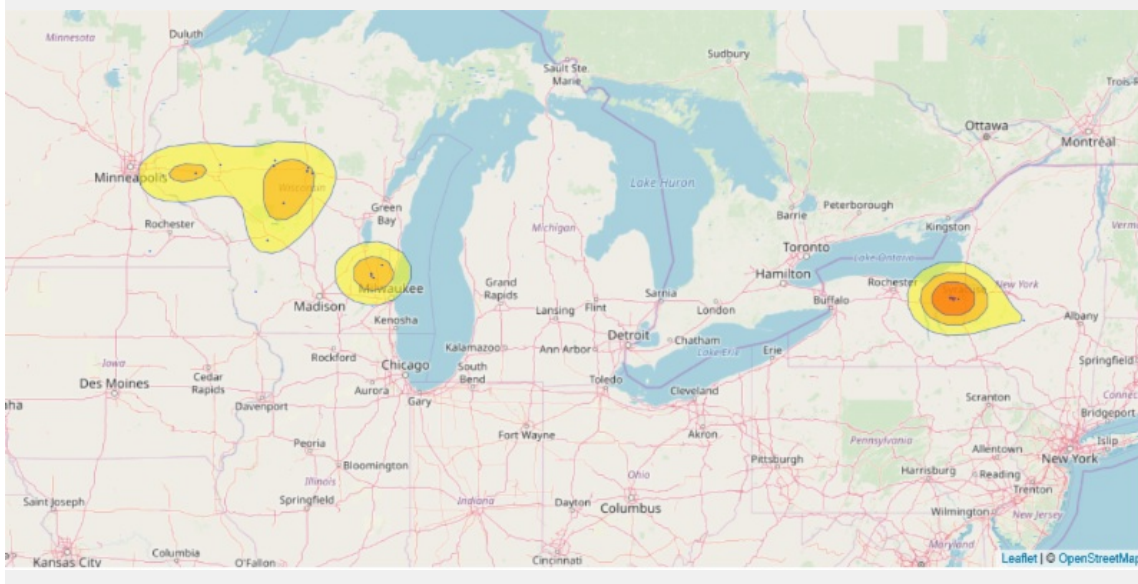
### **New Updates**

Elbridge, NY, Training Was a Success!

We want to welcome aboard all of the new Farm Safety Analysts that completed the training in Elbridge, New York. We had a great turn out, and we could really see the interest and passion for improving farm safety.

---

## Our Impact



### Current and New Project Members in Our Journey to a Safer Farm Community

- **Allenton, WI Training Participants**

- John Breuer
- Mark Steger
- Ron Naab
- Ryan Elbe
- David Beck
- Tim Herman
- Jeff Infalt
- Kevin Whelan
- Carl Wolf
- Stephanie Plaster
- William Hinkley
- Bernie Wolf



- **Wausau, WI Training Participants**

- Missy Kliebenstein
- Dan Kliebenstein
- Andrea Stelpflug
- Gary Eloranta
- Justin Athorp
- Ella Dzubay
- Jim Zwaschka
- Angie Yerke
- Andrew Yerke
- Jeff Behselich
- Kathy Fritsche
- Sara Mattke



- **Elbridge, NY Training Participants**

- \*Names are continuing to be added as the contact directory is

being built.

- **Menomonee, WI Training Participants**
  - \*Names are continuing to be added as the contact directory is being built.

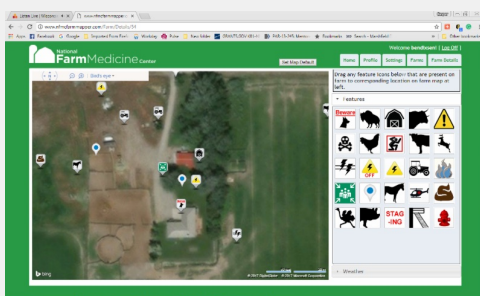


**We are working on putting the contact directory together. It will be up and running soon!**

For contact information on any of the above Farm Safety Analysts, click on the button below for the University of Minnesota RF-DASH contact directory page.

**Contact Directory Coming Soon!**

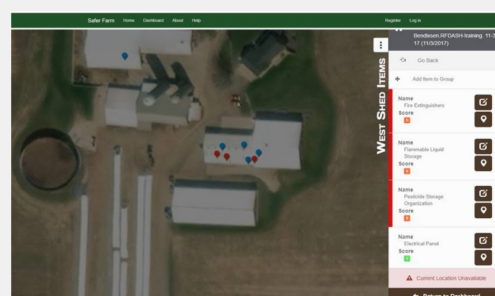
If you would like to be removed from the contact directory, please e-mail [RFDASH@marshfieldresearch.org](mailto:RFDASH@marshfieldresearch.org).



### Farm MAPPER

This web tool allows for digital maps of farming operations to provide emergency responders on-site information about hazards and resources. The goal is to expedite responses to farm emergencies and protect responders who may be unfamiliar with an individual farms layout.

[Click Here For More Info](#)



### SaferFarm.org

SaferFarm.org is an ever-evolving online tool. Its development is led by the National Farm Medicine Center with the purpose of providing first-hand information about hazards, a process for evaluating hazards, and recommendations on correcting hazards.

[Click Here For More Info](#)

## Mental Health First Aid

*For rural Wisconsin*

[Click Here For Mental Health First Aid Registration](#)

The National Farm Medical Center is hosting a Mental Health First Aid course throughout the central Wisconsin area. This 8-hour course teaches you how to identify, understand, respond to signs of mental illnesses and substance abuse



disorders, and much more. All classes are free and lunch/refreshments will be provided. Click on the button above to register online.

## Current Training Dates:

- **March 15, 2019**
  - Marathon County Extension office, Wausau, WI -- 9 am – 5 pm
- **March 21, 2019**
  - Neillsville Legion, Neillsville, WI -- 9 am – 5 pm



## Extra! Extra! Read All About It!

The RF-DASH program has been featured in the February 21, 2019 AGRI-VIEW issue! To read the article, click on the image to the left.



[Click Here To Read More!](#)

RF-DASH has a four part series articles written by Casper Bendixsen and Kathrine Barnes in *Progressive Dairyman*. It discusses what RF-DASH is all about, and how it is helping both farmers and firefighters/EMS to increase safety in agriculture.

- “Farm First Aid – Preparing for Tough Situations,” *Progressive Dairyman*, pages 60-61, January 18, 2018
- “Step One in Farm Safety: Recognize and Record the Hazards,” *Progressive Dairyman*, page 43, November 7, 2017
- “Use Farm MAPPER to assist, protect, prepare emergency responders,”

- “Rural firefighters delivering agricultural safety and health,” *Progressive Dairyman*, pages 42-43, October 1, 2017

### **The RF-DASH Team is Needing Your Participation!**

**The RF-DASH team is conducting interviews with RF-DASH trainers.** We will be reaching out to you to schedule a time to complete the social network analysis survey. No matter your level of involvement with the project, we still want to hear from you! It shouldn't take anymore than an hour of your time. We will be having in-person and phone interviews.

**Thanks!**

Contact:  
[RFDASH@marshfieldresearch.org](mailto:RFDASH@marshfieldresearch.org)

### **Interested in training others? Don't have the resources to do so? The RF-DASH team is here for you!**

If you are needing resources to support travel, mapping farms, or interested in conducting a training course, then NFMC is here to assist. Just reach out to us at [RFDASH@marshfieldresearch.org](mailto:RFDASH@marshfieldresearch.org), and we will assist you in any way we can on delivering Agricultural Safety and Health training.

Reach out to:  
[RFDASH@marshfieldresearch.org](mailto:RFDASH@marshfieldresearch.org)

### **Would You Like To Share Farm Safety Information?**

If you would like to feature something about farm safety in this newsletter, just reach out to [RFDASH@marshfieldresearch.org](mailto:RFDASH@marshfieldresearch.org). We would love to share anything that the farming and firefighter/EMS community are doing together to make agriculture safer!

**If you ever have any questions, don't hesitate to touch base with us! You can reach out to any of the following:**

Cap Bendixsen



Kate Barnes



Kyle Koshalek



Megan Sauer



#### **RF-DASH Team:**

- [RFDASH@marshfieldresearch.org](mailto:RFDASH@marshfieldresearch.org)
- Casper Bendixsen: [bendixsen.casper@marshfieldresearch.org](mailto:bendixsen.casper@marshfieldresearch.org)
- Kate Barnes: [barnes.kate@marshfieldresearch.org](mailto:barnes.kate@marshfieldresearch.org)
- Kyle Koshalek: [koshalek.kyle@marshfieldresearch.org](mailto:koshalek.kyle@marshfieldresearch.org)
- Megan Sauer: [sauer.megan@marshfieldclinic.org](mailto:sauer.megan@marshfieldclinic.org)

#### **Master Trainers:**

- Matt Keifer: [mkeifer@uw.edu](mailto:mkeifer@uw.edu)
- Chief Jerry Minor: [pfd911@tds.net](mailto:pfd911@tds.net)
- Dave Hill: [psuagrescue@gmail.com](mailto:psuagrescue@gmail.com)
- Dennis Murphy: [djm13@psu.edu](mailto:djm13@psu.edu)
- Jim Carrabba: [jim.carrabba@bassett.org](mailto:jim.carrabba@bassett.org)



RF-DASH is a research project that is funded through the Upper Midwest Agricultural Safety and Health Center (UMASH) and funded by the National Institute for Occupational Safety and Health (NIOSH), cooperative agreement U54OH010170.